

TRANSPORTATION

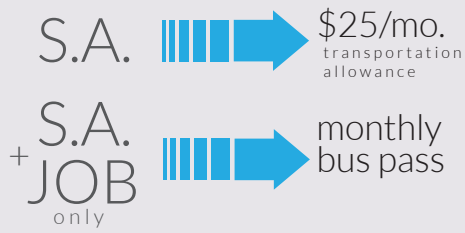
Having no access to reliable transportation creates limits. It limits the opportunities people can access including jobs, education and childcare, health care, food and community events.

We heard... That people without access to transportation are excluded from the workforce and their communities.



WHAT SOCIAL ASSISTANCE ALLOWS FOR MONTHLY TRANSPORTATION:

eg.



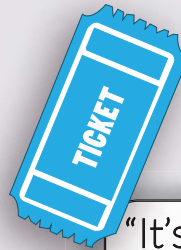
IN 2011,
ISLANDERS SPENT

14.4%

OF THEIR
ENTIRE

\$

YEARLY EARNINGS
ON TRANSPORTATION



"It's hard to get the best deals at the grocery store when you can't take a taxi to three places."

TO PUT THINGS INTO PERSPECTIVE:

It's \$17 for a return trip via taxi within Charlottetown city limits...

BUS SCHEDULES ARE
LIMITED AND DON'T

COVER THE
ENTIRE ISLAND

Most rural areas are excluded.



We heard... That the bus schedule is not easy for people with intellectual disabilities or literacy challenges to follow. The busses are also not always accessible to people with wheelchairs or electric scooters.

TRANSPORTATION SOLUTIONS
OFFERED BY THE COMMUNITY:

Have an Island-wide transit system with more stop times. This transit system should also be more accessible to people with disabilities and literacy challenges.

Have a subsidized transportation system for low-income people.

Give Social Assistance clients bus passes.

Give people incentives to be more energy efficient (hybrids, carpooling, etc.).